

## Care & Maintenance

- Readjust the straps as needed to prevent the brush from shifting during use, especially after heavy snow, rain or mud exposure.
- Remove the brush regularly to clear trapped dirt, mud, and debris from bristles.

## Safety Warning

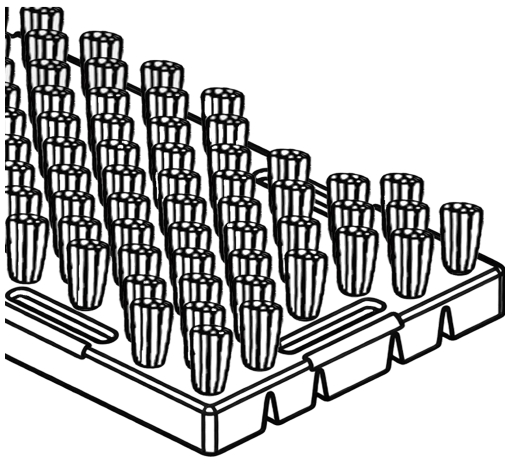
- This product is for cleaning purposes only. DO NOT use the brush as a step or standing surface. It is not a replacement for factory steps.
- Ensure the brush does not block safe entry to or exit from the vehicle.
- Keep bristles clear of eyes, skin, and loose clothing to prevent injury.
- Inspect hook-and-loop straps for wear or fraying; replace immediately if damaged.

## Contact Information

For any questions or concerns, please visit our website: [www.val-tecs.com](http://www.val-tecs.com) or email us at [support@val-tecs.com](mailto:support@val-tecs.com). We are always here to help and ensure your satisfaction with our products. Keep this manual for future reference.

# VALTECS

## TRUCK STEP BOOT BRUSH

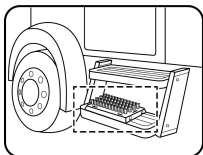


**USER MANUAL**

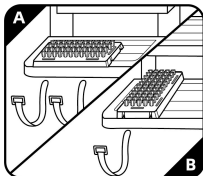
## Package Contents

- 1 × Truck Step Boot Brush
- 2 × Hook-and-Loop Straps
- 1 × User Manual

## Installation



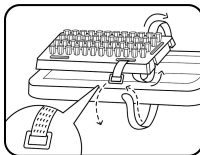
1. Select a flat, stable area on your truck step or running board. Position the brush along the outer edge (away from the truck body) of the step for optimal cleaning.



2. Choose an orientation for mounting:

- A. Lengthwise (brush long edge parallel to the step)  
- use 2 straps.
- B. Crosswise (brush short edge parallel to the step)  
- use 1 strap.

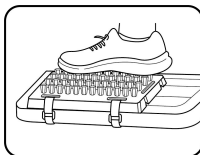
Keep the remaining strap as a spare.



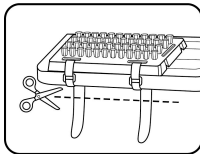
↑ Hook-and-Loop Side Up

3. Wrap the hook-and-loop strap around the step and the brush base, feed the end through the retainer loop, pull tight, then press the hook-and-loop surfaces together. Repeat for the second strap if using lengthwise.

\*Note: Ensure the hook-and-loop (the scratchy side) faces up when threading the strap.



4. Test stability by stepping only briefly on the brush with light pressure. Do NOT use it as a permanent standing surface. Ensure the brush does not shift or move under this light test load.



5. Trim excess length from the strap end if needed.